

# The A4440 and Ketch Junction enhancement BULLETIN



July 2014

Dear local resident,

Please find below the latest update for works that are due to take place in the near future:

## **Pylon Protection:**

- The contractors have started to construct the concrete walls around the electricity pylon. Once complete, these will provide the necessary protection to the pylon from moving traffic;
- The works are expected to take 5-6 weeks to complete.

## **Utility Diversions**

- The utility diversions will commence shortly. These include alterations to the water, gas, electricity and fibre optics;
- The alterations are necessary so that the new roundabout and the approach lanes can be constructed;
- The works are expected to take 12-14 weeks to complete.

## **Drainage and Compaction**

- Excavation, drainage and compaction works in Phase 3.3 will commence shortly. This is the section that runs past the Power Park towards Norton;
- This will enable the existing carriageway to be widened as part of the dualling works;
- The duration of these works is likely to be 8-10 weeks;
- The compaction of 2 layers of stone in phase 2.3 (Car boot entrance towards Norton) is almost complete. The Contractors will then undertake the required trenching works on behalf of the utilities in phases 2.1, 2.2 and 2.3 (The entire length of the works from Ketch towards Norton, on the car-boot side);
- With the Contractor undertaking the trench works, the phasing and programming for each utility alteration can be co-ordinated effectively and continuity of work ensured;
- The duration of this aspect is contained within the 12-14 weeks of utility diversion work as mentioned above.



Find out more online:  
[www.worcestershire.gov.uk/ketch](http://www.worcestershire.gov.uk/ketch)

**GRIFFITHS**  
Engineering & Construction

  
Department  
for Transport

 **worcestershire**  
county council

# The A4440 and Ketch Junction enhancement BULLETIN



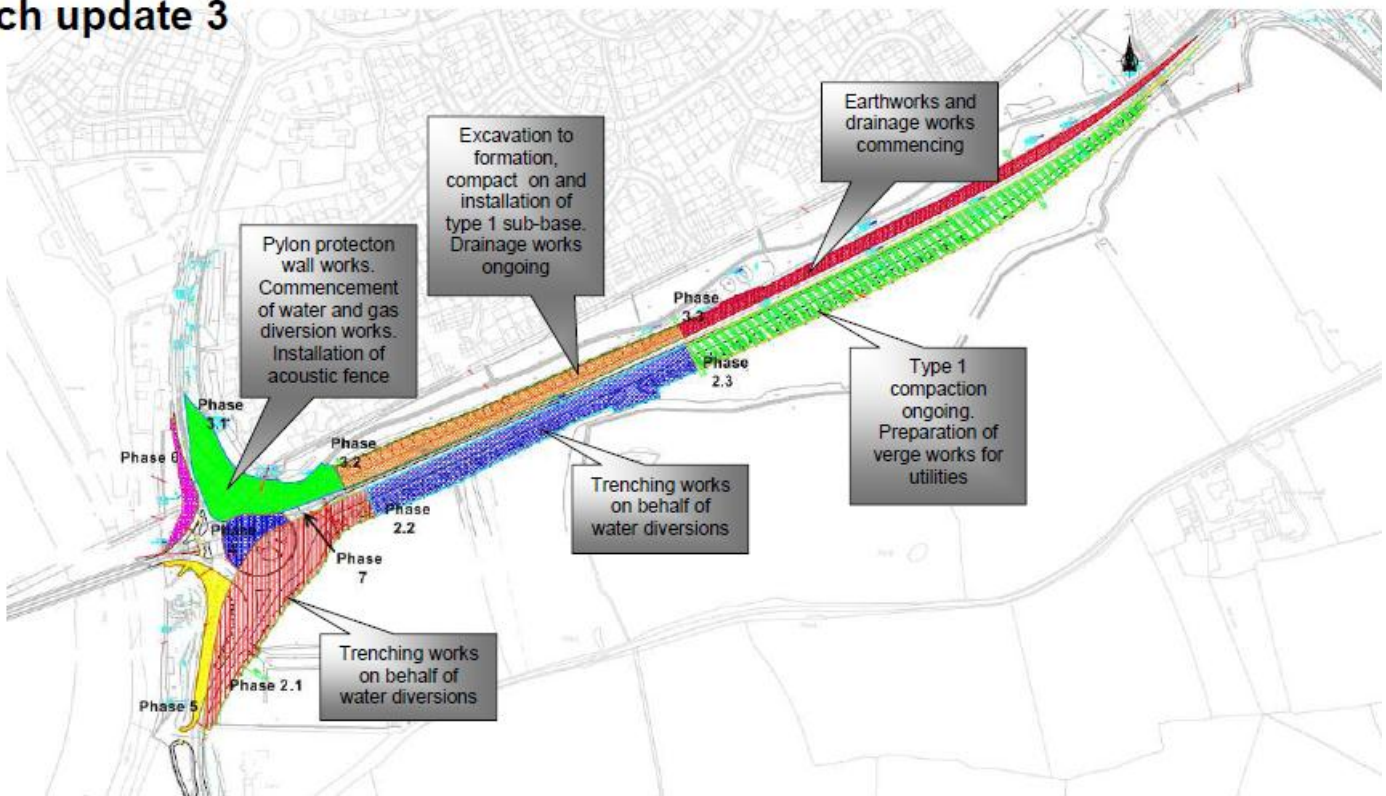
## Other progress:

- The acoustic fence, once installed will be 35m shorter in length than the present hoarding erected on site, where the bunds overlap. This is primarily due to the existing bund along this section being higher than the fence. By leaving the bund exposed, it will allow WCC to alter the bund to create a much better overlap between the front and rear bunds and enable partnership working with Worcester City Council to enhance the landscaping aspects of the bunded areas once they have been amended.

If you require any further information then please email: [wts@worcestershire.gov.uk](mailto:wts@worcestershire.gov.uk)

Thank you

## Ketch update 3



Ketch works programme – July-August 2014

